



BRIDGEHEAD CONSULTANCY

Collaborative construction consulting. **Redefined.**

Collaborative construction consulting. *Redefined.*

Bridgehead Consultancy

📍 DH1

Lee Wilson

Managing Director

m: 07425 315 460

t: 0208 515 6810

e: lee.wilson@bridgeheadconsultancy.com



We help ...

Businesses in the Construction, Rail Infrastructure, Technology and Logistics sectors with Brand Development and work-winning

We enhance business growth and brand development for companies in Construction, Rail Infrastructure, Technology, and Logistics. Our strategies focus on strengthening market presence and winning more contracts, ensuring sustainable success and competitive advantage.

Our services provide clear preconstruction advice and guidance, utilising the latest planning technologies, models, and data. We conduct comprehensive reviews of project logistics, from concept design to handover, integrating our technology to ensure successful project delivery. Our tailored consultancy, combined with extensive industry experience, maximises operational and commercial efficiencies across the construction supply chain.

The advancing construction industry often leads to fragmented views of project logistics and their role within the project lifecycle. Typically, logistics considerations such as movement, deliveries, and final fit-out—are addressed only after planning and design have been finalised, leaving critical on-site factors overlooked. Our in-depth knowledge and experience support construction organisations from project inception, enabling contractors to integrate key site strategies early on, promoting time and cost efficiencies, innovation, and overall value.

Munnelly Group Ltd

Established in 1982, the Munnelly Group has grown from a family owned construction company to a market leading UK construction and infrastructure support services group.

Munnelly Group Ltd is the parent company of

- **Bridgehead Consultancy**
Pre-construction planning and management services.
- **Bishopsgate Group**
Provider of third-party payment solutions.
- **Guardior Security**
Provider of security management solutions.
- **City Calling**
Provider of professional recruitment solutions.
- **MacRail**
Provider of site access solutions.
- **Munnelly Support Services**
Provider of on-site construction solutions.
- **Weston Analytics**
Provider of workforce management solutions.
- **Severn Partnership**
Provider of geospatial, land survey and mobile mapping services.

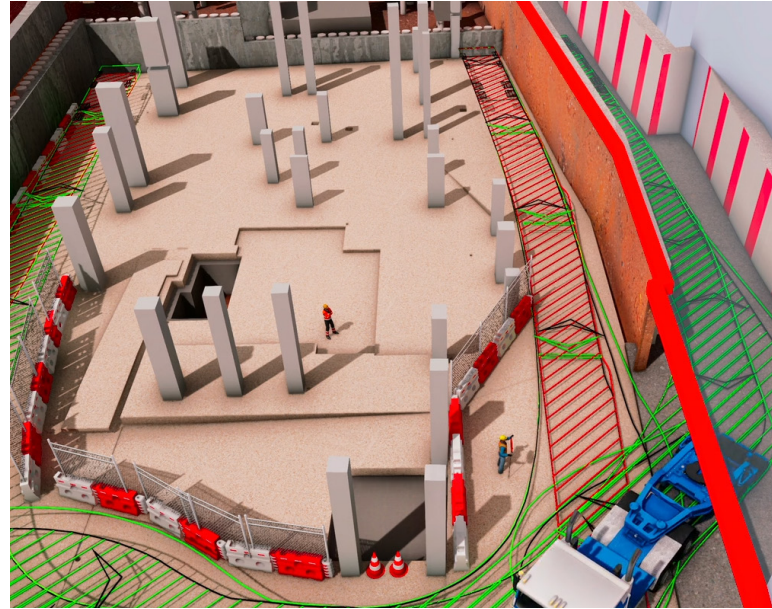


Planning

Vehicle swept path analysis (SPA)

We specialise in providing comprehensive swept path analysis solutions to seamlessly integrate vehicles into your project design. Our analysis evaluates the flexibility and dimensions of specific vehicle types, ensuring they can navigate designated routes efficiently. By identifying optimal turning circles and critical areas, we suggest necessary design or traffic management adjustments for enhanced safety and efficiency.

Our expert team identifies potential bottlenecks and improves traffic flow by analysing intersections and key points within your design, ensuring compliance with regulatory standards and practical functionality. With a proven track record, our professionals deliver accurate and reliable vehicle swept path analysis services.



Transport assessments

Transport assessments are crucial for evaluating the potential impact of proposed developments on surrounding transport networks. These assessments analyse traffic flow, capacity, and safety to ensure that any new project integrates smoothly with existing infrastructure. By identifying potential issues, such as increased congestion or safety hazards, we develop strategic measures to mitigate adverse effects. Our team works to enhance traffic efficiency and ensure regulatory compliance, ultimately supporting sustainable and community-friendly development. With our expertise, you can confidently advance your projects while minimising disruptions and enhancing overall network functionality.

Construction Logistics plan

Construction Logistics Plans (CLPs) are essential for developers and contractors seeking planning permission, as they minimise the negative transport impact of construction projects on local communities, businesses, and the environment. Engage with us early to navigate planning authorities smoothly and discover optimal logistics solutions that ensure seamless project flow. We eliminate obstacles, providing certainty from the concept stage onwards.

At Bridgehead Consultancy, we develop tailored CLPs for official planning and highway authorities, including site-specific stages. Collaborating with developers, clients, and principal contractors, we deliver comprehensive logistics layouts, complete with vehicle swept path analysis and detailed CAD-format phases with ordnance maps.

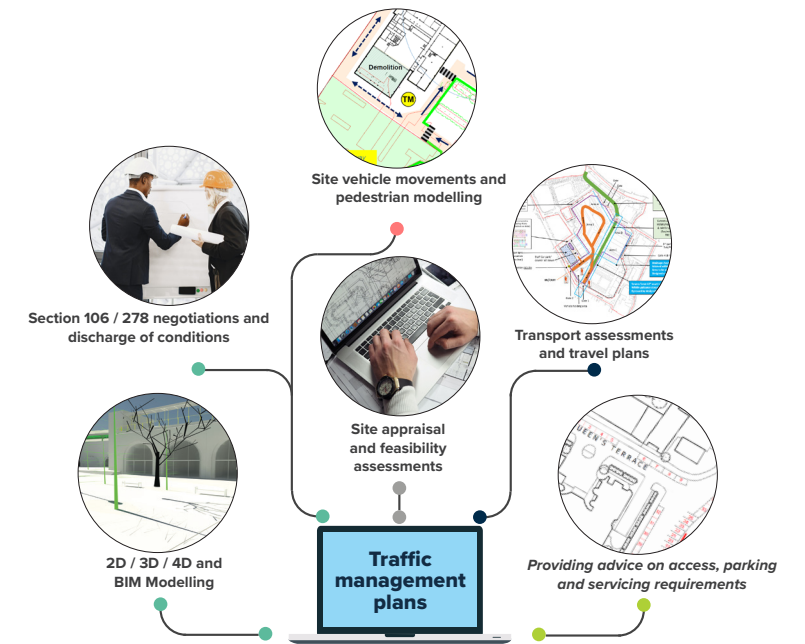
Traffic management

Our team collaborates closely with clients, contractors, subcontractors, stakeholders, and local authorities to optimise construction phasing, site access, and egress points through comprehensive long and short-range traffic plans.

By thoroughly analysing site requirements, the local area, and the project programme, we identify key impact areas and work to minimise disruption to roads and the local community.

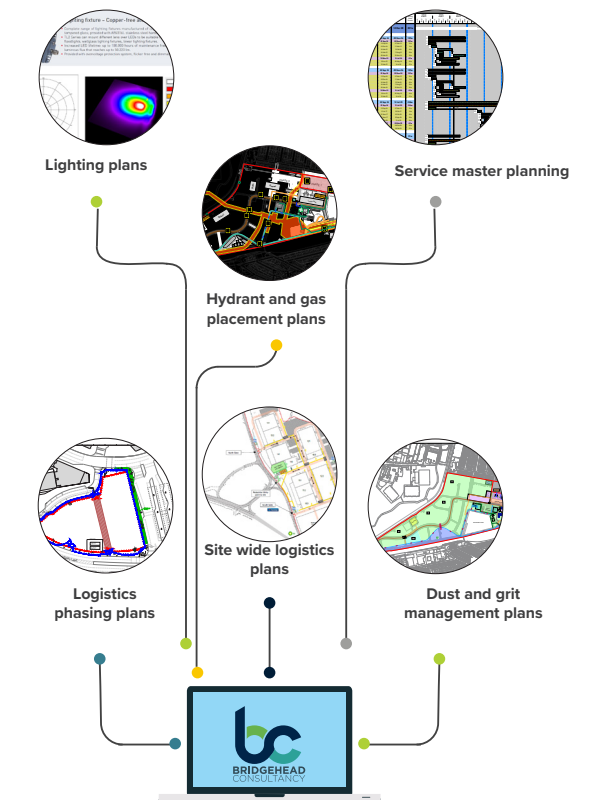
Our professional approach, combined with our expertise in construction methodology, planning, analytics, delivery software, and extensive experience, ensures the implementation of robust and realistic traffic management plans for any UK worksite.

Each traffic management plan is tailored to the specific project and typically includes the following actions:



Logistics

A project's logistics solution must consider the surrounding environment and the interests of all relevant stakeholders. Effective delivery is essential to avoid unnecessary disruption to the local community and ensure the safe and efficient progression of the construction phase. Our expertise is built on years of experience providing a fully integrated in-house solution, encompassing Delivery, management, Site establishment, Security, Access control, Plant management, Waste management, Materials handling and consolidation, Health and safety monitoring, Occupational health. This comprehensive approach ensures that all logistical aspects are seamlessly managed, promoting safety, efficiency, and minimal community disruption.



Planning (cont.)

Site layouts

At project outset we develop a site plan that details how the construction site needs to be set up. The plan will detail the

- Details of temporary accommodation foundations
- Placement of accommodation and site offices
- Placement of welfare facilities
- Hoarding and fencing requirements
- All footpaths, walkways, routes, car parks, delivery and access points

Our experienced logistics team will manage the installation, project management, maintenance and removal of all site facilities to completion.

With a site plan established we then focus on site provision and how we can create a safe, secure and comfortable site. Our project team work to identify what welfare provisions are required on site and how many.

We then strategically plan their placement and accessibility to ensure all site workers have adequate access at any point on site.

- Site office and accommodation
- Separate male, female and disabled toilets and shower facilities across site.
- A fully equipped canteen and kitchen
- Break out and rest areas with televisions and comfortable seating
- Drying rooms
- Prayer rooms
- Secure locker areas
- Washing and drying facilities

Consolidation centre

A Consolidation Centre Plan aids and enhances the delivery management process of a project, providing greater control and productivity for a construction site, it further enables lean construction initiatives, Just-In-Time deliveries and sustainable best practices.

Bridgehead works with our clients to find the optimum solution for on-site activity and movement, and the use and implementation of consolidation plans can help enable modern methods of construction, increase on-site productivity and reduce waste.

Bridgehead incorporate consolidation centre planning into their wider logistics consultancy, working to ensure lean and responsible construction activity.

Delivery management

Managing deliveries for a project requires extensive and robust coordination to minimise the risk of disruption whilst maintaining site operations.

Our delivery management process is integrated into our traffic management planning operation, this ensures the two work together proactively.

We seek to identify any delivery constraints within the area and build this into our traffic management plan. Our logistics manager oversees the coordination of our project's deliveries through:

Using the Delivery Management System (DMS) to allocate the appropriate level of resource to key areas across the worksite. Enforcing delivery penalties and non-adherence (late or missed)

Ensuring the system only allows booking to be made during prescribed delivery hours (and not outside of)

Ensuring deliveries align with hoist and crane slot allocations (vertical transportation)

Managing the loading and unloading of materials and goods in conjunction with operations plans

Security

Manned guards

Manned guarding ensures your project is protected from unauthorised access, damage, and disorder at all times, serving as a critical component of a comprehensive security plan. We offer a full manned guard service tailored to your project's specific requirements, providing a robust guarding solution.

Our process begins with a thorough security risk assessment of your existing measures, followed by the development of a customised solution that includes on-site patrols, guarding entrance points, and 24/7 security monitoring. This holistic approach guarantees continuous protection, deterrent and peace of mind throughout your project's lifecycle

Dog handling

Dog handling services enhance the security provided by our team of guards, acting as both a heightened deterrent and an additional layer of protection. Our dog handlers are experts in working with professionally trained security dogs and are highly experienced in using these animals to bolster security presence and mitigate risks. This specialised service significantly increases our capability to prevent and respond to security threats, ensuring a safer environment for your project.

CCTV

Our expert team specialises in developing customised security plans and conducting thorough risk assessments, addressing the unique challenges associated with construction sites. By combining expertise with innovative solutions, we prioritise security through:

- Mobile CCTV systems

Providing a versatile and effective solution, mobile CCTV systems offer flexibility, rapid deployment, and integration with other security measures. They play a crucial role in safeguarding assets, people, and property across various environments.

- Control centre

Our 24/7 control room offers a unique solution to assist your business. It provides safety, security, and compliance while being a cost-effective means to reduce your labour requirements.

Through these comprehensive measures, we ensure the highest level of security for your construction site.



24/7, 365 CONTROL ROOM



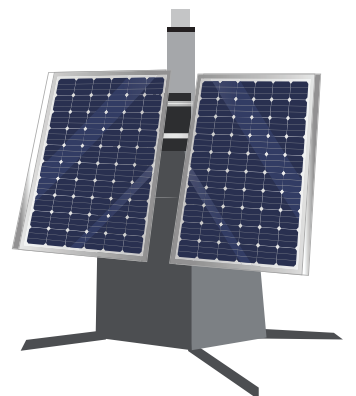
REMOTE ACCESS ON THE GO



STATIC CCTV CAMERAS AND INSTALLATION



PORTABLE, SOLAR-POWERED CCTV TOWERS



DOG PATROL



Marketing, work-winning, event management, graphics and communications

Growing your business, exploring new opportunities, or venturing into new markets are all supported by an organisations approach and strategy to construction marketing.

Marketing forms the key foundations of an organisations proposition and their ability to connect, engage and communicate with their target audience.

Our marketing services, which focus on delivering bespoke construction marketing packages and services to construction industry businesses, has been developed to aide an organisations business development, growth and presence within their market sector.

We know that there is no magic formula when it comes to marketing, each business needs a bespoke and individual strategy that supports their growth aspirations, promotes their unique selling points and differentiates them from the competition.

Our unique blend of construction marketing expertise, data, creativity and technology, combined with our industry knowledge means we can develop a strategy, plan or initiative that fits with your growth plans.

Strategy

Working with you to create a bespoke marketing strategy that supports the overall business and growth objectives.

Digital marketing

Creation of targeted initiatives and campaigns that engage with your prospective client base.

SEO and SEM management

Optimising your online assets to drive quality traffic and prospects to your website.

PR and communications

Generating positive reputational perception and relationships within your market sector.

Social media management

Our all-encompassing social media management covers posting, advertising, targeting and engagement strategies.

Content production

Creation and publication of engaging marketing content which generates business leads.

Brand and design management

Building a recognisable identity that is positively perceived within your market sectors.



Work-winning via bids, tenders and compelling proposals

A key element within the pre-construction phase of a project is procurement and tendering, the process of transparently selecting the projects supply chain that will deliver best value. Our team provides bespoke bid management, tender support and proposal writing services to organisations across the UK.

It is during this part of a projects lifecycle that suppliers are invited to tender to demonstrate their experience, capability, capacity, and price for undertaking the works package.

This process is highly competitive and increasingly important for organisations looking to win new work. Bridgehead specialise in the production of bid responses for construction sector tenders. From assisting organisations through the initial SQ stage, completing technical tender responses at ITT stage, or managing the creation of an RFI.

Bid writing

The production of tender responses, technical questionnaires and quality submissions are a key part of any successful bid. Whilst time consuming in their creation, these elements enable an organisation to showcase their expertise and show why they should win the work. Bridgehead can support organisations with their bid writing through:

- Providing skeleton answer templates (what we believe should be included within the answer)
- Writing single technical questions
- Production of entire written technical response

Bid review

An external review of your tender response can provide useful feedback and suggestions ahead of submission deadlines. Bridgehead work with organisations to review their submission documents and advise on areas where they think they can add additional value to score higher. Our bid review services can include:

- A mock mark of entire submission
- Review of individual questions
- Compliancy check that all key information have been included

Bid design and presentation

Tenders can be submitted in various formats, some require organisations to use their templates, others use online forms, and some allow bidders to present a bid in their own chosen format.

Our bid design services include:

- Complete technical bid design
- Creation of bid assets
- Production of bid / answer cover pages
- Adhoc design services

Labour hire

- Traffic management
- Logistics
- Forklift
- Supervisor

We are focused on delivering exceptional recruitment and staffing solutions, taking the time to consider how we are best placed to provide you with a tailored service which is honest, knowledgeable, reliable and has your business catered for.

Our comprehensive approach also takes into account individual project parameters, harnessing exactly what and who you need.

We make it our business to get to know you face-to-face, building longstanding relationships where you are listened to and understood. We actively seek to be a safe pair of hands who you can trust in to deliver. Our teams will manage the process end to end, so you can feel secure that your requirements are being effectively met..

Compliance is a key driver in the way we work and we invest heavily in this side as we appreciate the importance of providing you with solutions which streamline your business and help you seamlessly meet the criteria set out in latest legislation.



We offer roles across all trades and professions within the construction sector, from on-site operatives, through white collar, to board level executives.

We seek out and work with individuals who have a strong work ethic, understand what is required and want to do an excellent job.

We believe in nurturing talented people and will invest our time to make sure you are presented with the best opportunities both short and long term.

We are a diverse team who work hard, aspiring to be experts in our roles and delivering effective results. We are inclusive and want to get to know you.

By working closely, we can share ideas and knowledge, understand what you are looking for, alongside what is needed, to see whether we have a good match.

Our approach means we can be honest and reliably get you to the right opportunity. Our aim is to add to your experience, strengthen your skillset, enhance your reputation and further develop your career.

Payroll

- CIS
- POD
- Umbrella
- PAYE

Bishopsgate Contracting Services (BCS) offers a comprehensive suite of services, specialising in the processing of payments to subcontractors within the UK construction industry. By partnering with BCS, our clients can eliminate the risks associated with engaging subcontractors and benefit from increased efficiency by outsourcing associated administrative tasks, including:

- **Collating right-to-work documentation**
- **Checking the settlement status of EU nationals**
- **Ensuring subcontractors have appropriate insurance**
- **Verifying UTR numbers with HMRC**
- **Producing CIS statements for subcontractors**
- **Timely payment of CIS deductions to HMRC**

Additionally, clients only need to make a single entry on return documentation showing the total amount paid to Bishopsgate, simplifying their administrative burden.

As a gross status subcontractor, we eliminate the need for CIS deductions to be paid to HMRC and incur no CITB levy costs. We handle the engagement with individual subcontractors, saving you valuable time each month when submitting your CIS300 return.

In addition, as a subcontractor supplying construction services, we are fully prepared for the domestic VAT reverse charge legislation that came into effect in March 2021. This means that while our invoices will indicate VAT where applicable, the VAT will not be payable to Bishopsgate, thereby helping to protect your cash flow

THE BISHOPSGATE PROCESS

Maintaining high levels of legislative compliance and service provision requires the right people and processes throughout the onboarding and payroll process. At Bishopsgate, our goal is to make onboarding workers and processing weekly payments as simple and intuitive as possible.

We are accredited by Professional Passport and FCSA, audited by PayePass, and a TEAM Network supplier. Our systems and data are protected against cyber-attacks, holding the Cyber Essentials Plus accreditation. To drive workforce engagement, we offer benefits and wellbeing solutions through Remus Rewards.

We continue to invest in our teams, systems, and processes to ensure you have full confidence in your decision to engage with us.

Upon agreeing to terms and signing the client agreement, you will receive a Bishopsgate Employment Services welcome pack. This pack includes everything you need to know about our process, such as:

- **Candidate registration**
- **Payment process**
- **Payment deadlines**
- **Client portal access**

Additionally, you will receive logins for your client portal and a document containing all our business credentials for your records, allowing you to verify our UTR status with the CIS.



PayePass
Verified Provider



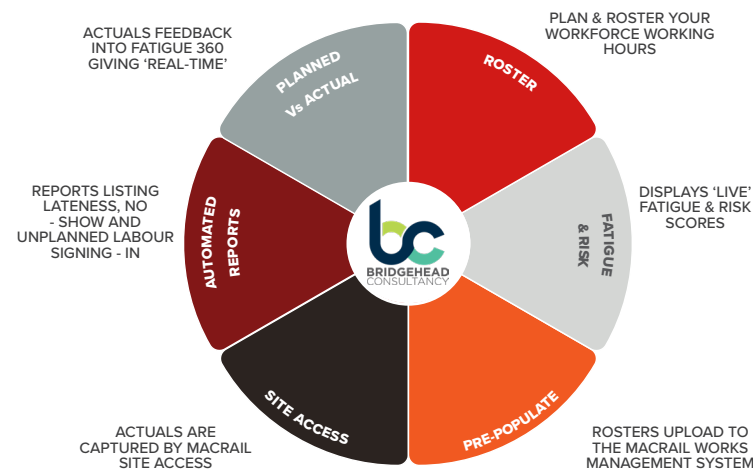
Constructionline
Gold Member



Tech & apps

Fatigue 360

FATIGUE360 enables planners, schedulers and rosterers to monitor fatigue in their workforce. A fatigued workforce is less productive, more costly and will put themselves or others at risk. This unique system allows all business to plan and manage not only working hours, but also the travel and rest periods around work shifts.



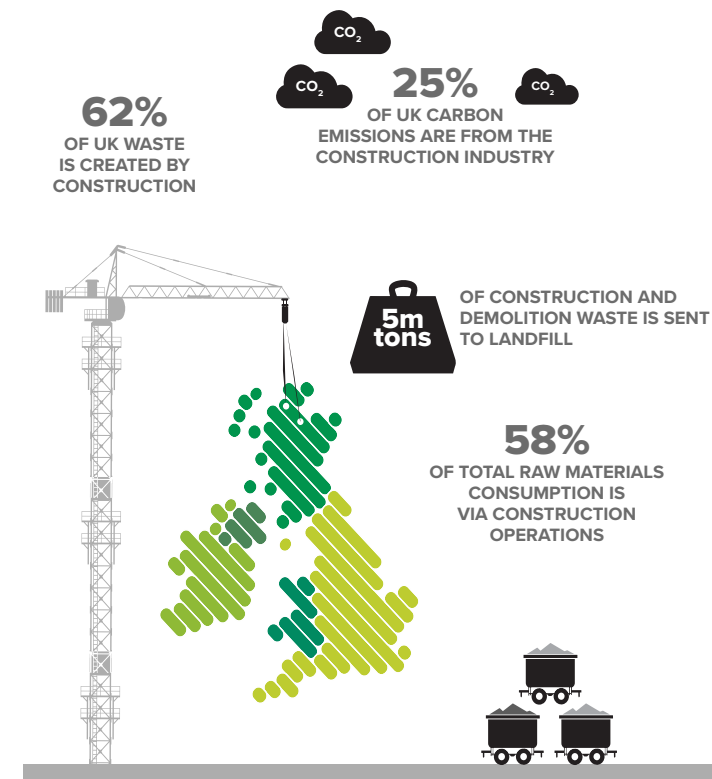
Enviro360

We are extremely confident that Enviro360 will have a significant impact on how trade contractors and subcontractors view waste. In particular, the levels of waste produced, the unsustainable way it is handled and the huge reduction in the costs associated with it. Enviro360 creates a collaborative, two-way, 'best practice' environment with site teams and contractors, awareness is raised and tackled head on, responsibilities and preventative measures are developed, and there are benefits and cost savings for all involved.

The key benefit of Enviro360 will positively enforce better behaviours and attitudes towards waste through empowerment and accountability. It will place the emphasis of waste production

Designed for use within the construction and infrastructure sectors, Enviro360 is a unique, cost-effective and user-friendly, waste management platform. The interface is constructed

with simplicity in mind to monitor and accurately record waste data, creating real-time waste quotas. Enviro360 can be easily downloaded and installed to NFC-compatible Android devices and laptops ensuring complete waste control from the start of a construction project.



Construct-AI

ConstructAI is an innovative platform developed by a team of visionary construction, technology, and marketing professionals, aimed at revolutionizing the UK's construction industry. By integrating artificial intelligence, we provide users with essential tools and intelligence to navigate the complexities of construction projects, ensuring compliance with British building standards and regulations.

Delivery management system (DMS)

We utilise a web-based delivery management booking system that enables all Plot Contractors to easily access and schedule their deliveries in real time. This system allows deliveries to be booked within specified time slots, up to four weeks in advance, facilitating effective scheduling in alignment with project timelines. Given the site-wide implementation and the involvement of multiple Plot Contractors, it is essential that each contractor provides the necessary delivery coordination staff and uses the web-based Delivery Management System accordingly.

Feature

- » Online booking portal
- » Accept/Reject
- » All correspondence is online
- » Customers administer site rules online
- » Booking times and offloading areas
- » CO2 emissions and travel details
- » Driver/Contractor information

Benefit

- » All requests received in advance of delivery
- » Customers control all requests
- » Record of accepted and declined requests
- » Clear processes and procedures
- » Extensive reporting of important KPI's
- » Delay or cancel deliveries if situations develop on-site or site closure

IT support Agility360

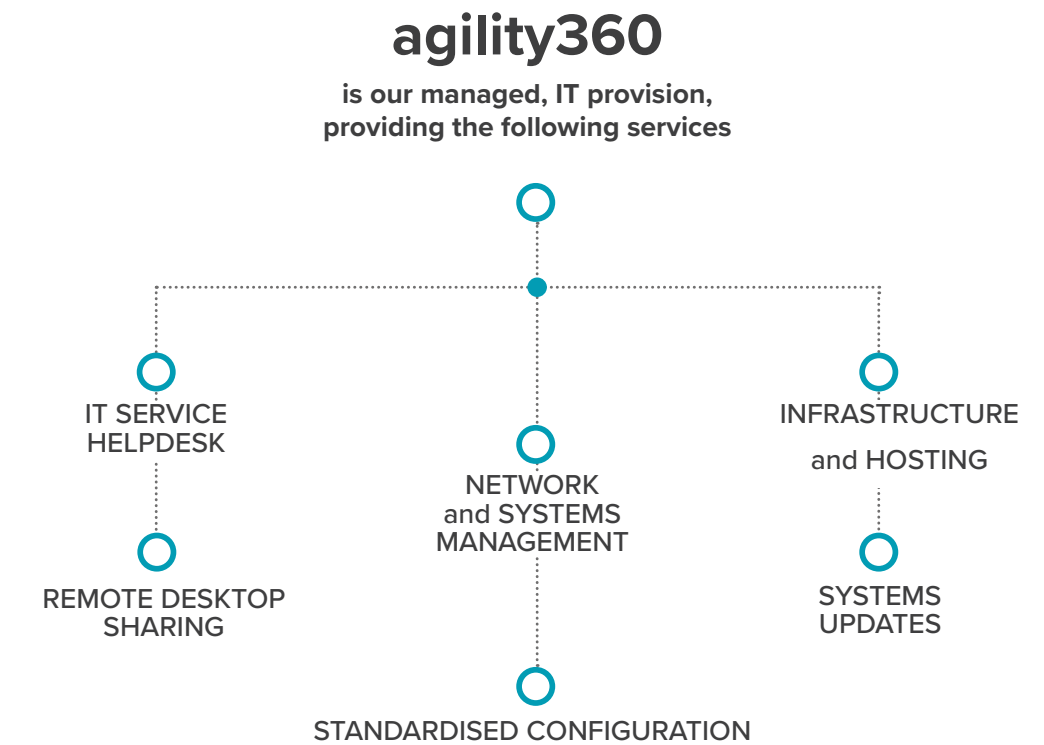
Agility360 is an innovative managed IT service, which keeps your business safe, secure, and compliant.

Providing trusted, reliable IT systems and services, which offer peace of mind and free up more time for you to focus on the development and growth of your business.

We are a SaaS and managed IT service provider, delivering customer-focussed solutions and services. We work with you to provide business value that aids the growth and development of your organisation, services, and people.

With technology and IT forming the key infrastructure for all businesses, we specialise in providing IT support and developing software for the evolving digital environment.

Whatever your IT needs, we have it covered.



Mobile digital boards

- Information
- H&S instructions
- Alerts
- PPE
- Direction
- Contacts

The MacRail app

Our biometric digital solution assists with contactless site access control. Our app allows your employees to watch inductions and briefings, and sign in and out of their planned shifts.

Their results seamlessly feed back into the fatigue and worksite management system, giving you the full 360 of planned versus actuals.

Helping to reduce your environmental impact by removing the need of paper based registers, this cost effective solution helps drive down cost and increases safety.



Command and control vehicles

Our mobile command and control vehicle is the perfect solution for midweek and weekend possessions, as well as emergency works. It operates using sustainable and eco-friendly power, making it an excellent choice for businesses.

Equipped with essential safety equipment such as defibrillators, spill trolleys, first aid kits, and fire suppression systems, our mobile office drives on to a site at the beginning of works and departs once the site is completed.

This saves businesses valuable time and money on deliveries of traditional welfare.



Access control

- Turnstile
- Face recognition
- Automated time sheets
- Fire role call
- Inductions

Facial recognition

Accurately authenticating facial biometrics, the innovative hardware has been integrated with the MacRail System, giving you all the safety benefits with the added bonus of contactless sign ins.

Automated time sheets

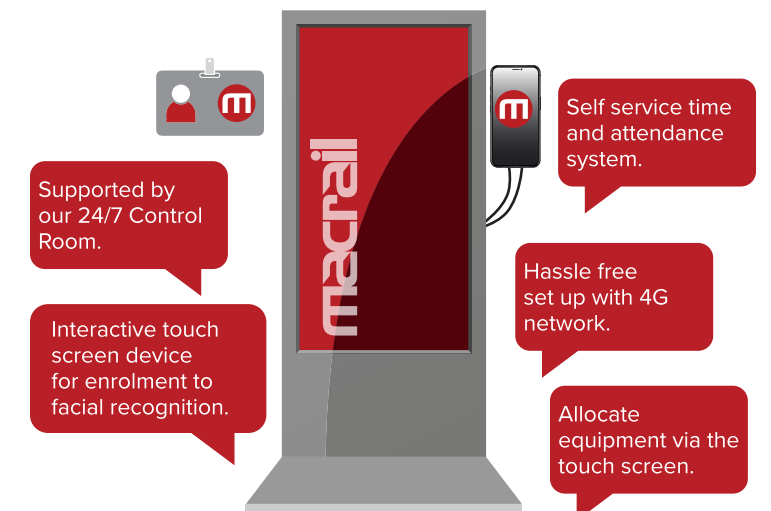
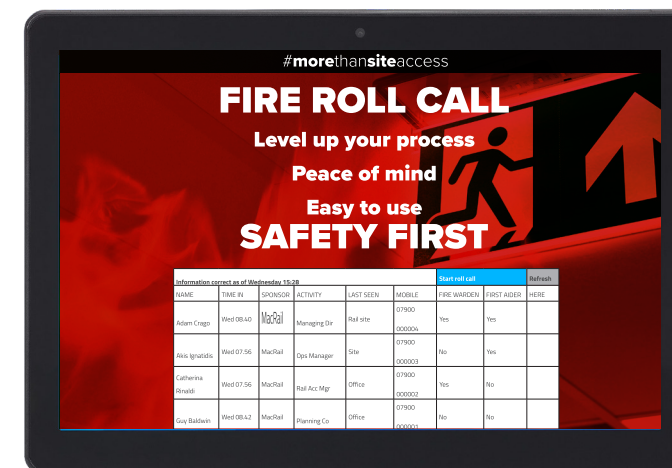
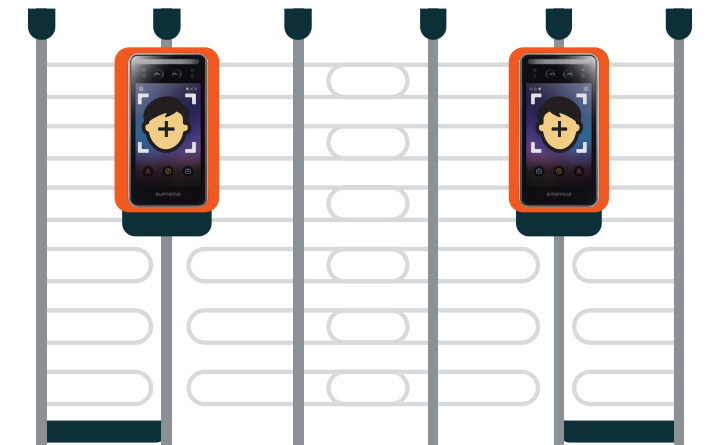
A major contributor for you to achieve a 'paper-free', work environment.

The timesheet service is available when utilising any of our site access services (SAC, control room, facial recognition and MacRail app).

Choose from one of three options; pay by planned hours, pay from actual hours or, a planned versus actual timesheet.

Fire roll call system

Seamlessly integrates with our facial recognition and our proprietary app for optimal performance. while providing emergency services with vital information if there is an incident.



Case study

Comprising an East-West solar array to maximise output throughout the day, Cleve Hill could provide enough affordable and clean electricity to power over 91,000 homes.

This project will generate up to 350MW of clean renewable electricity, reduce the UK's dependence on fossil fuels and lower CO2 emissions by 68,000 tonnes a year. Electrical connection infrastructure will be upgraded to connect the solar park to the existing Cleve Hill substation.

Due to the capacity of the solar and energy storage park exceeding 50MW, the project is classified as a Nationally Significant Infrastructure Project (NSIP).

In May 2020, the Secretary of State for BEIS granted development consent for the project. This followed a series of public hearings in and around Faversham and Sittingbourne which covered a range of key issues on environmental matters.

This enabled the developers and stakeholders to debate and respond to various topic areas including wildlife, traffic, visual impacts and battery safety.

Engagement with the local community forms an integral part of the project and since proposal stage, Cleve Hill Solar Park Ltd have met with people from across the community at consultation events and meetings to share and receive feedback on the development.

Our knowledge of the site and operating within safety-critical environments will stand PEP in good stead throughout the project

Reduction of overall traffic numbers from the number identified in the Preliminary Environmental Impact Report (PEIR) and developing a Construction Traffic Management Plan (CTMP) which incorporates comments and concerns for congestion and traffic numbers.

Construction is currently scheduled to be carried out across 4 phases, with up to 80 two-way HGV movements (40 vehicles required per day during the peak of construction. It is also anticipated that up to 400 construction staff will be site based at this time.

The location of the site in relation to the strategic and local road networks coupled with the sensitivities of local stakeholders, makes a consultative and fully embedded traffic and stakeholder management strategy a priority.

Our approach to projects is focused upon adapting our existing systems and processes to the challenges presented by each development.

Starting at the preconstruction phase, we will work with PEP to ensure that all aspects of the TCMP are delivered. With the main delivery routes travelling through the village of Graveney, the TCMP highlights that 'Sensitive, built up areas (villages, towns) to be avoided by temporary construction traffic due to congestion, reduction of safety and air and noise pollution'.

It is vitally important that residents are reassured that their concerns raised throughout the consultative period have been listened to and acted upon.

We will look to develop a stakeholder management and communication plan that ensures that all community stakeholders have visibility with regard to not only our systems and processes but also our results.

We believe that this transparency and consultative approach gives confidence that the logistics are being effectively planned, managed and monitored to keep the project site moving safely and consistently, in line with both project requirements and community needs.

This agile approach to service provision, delivered with a strong focus on consistent stakeholder management, is a principal reason

that we are trusted by the largest contractors to bring our planning and site services up against the unique challenges presented by working in sensitive environments across U.K. infrastructure.

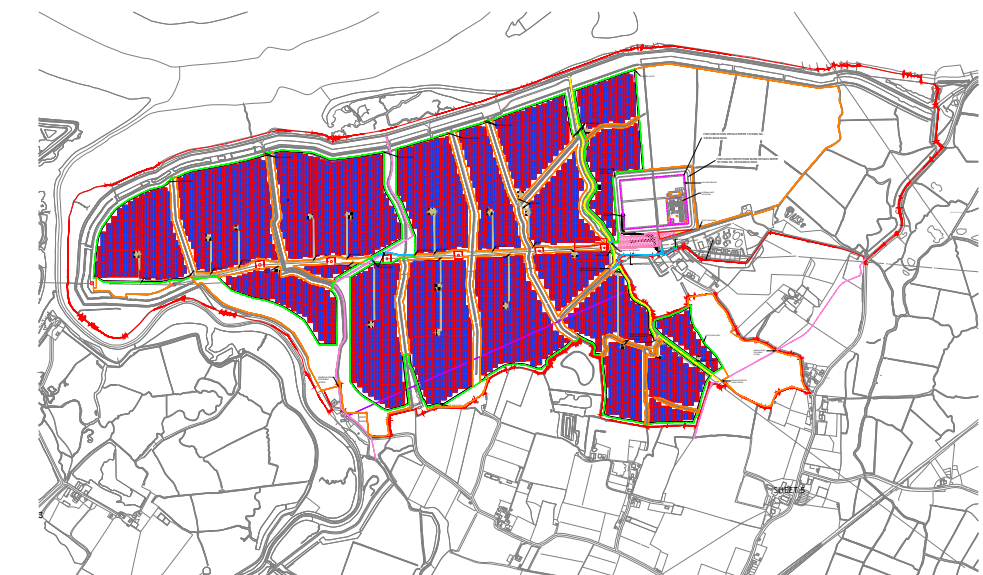
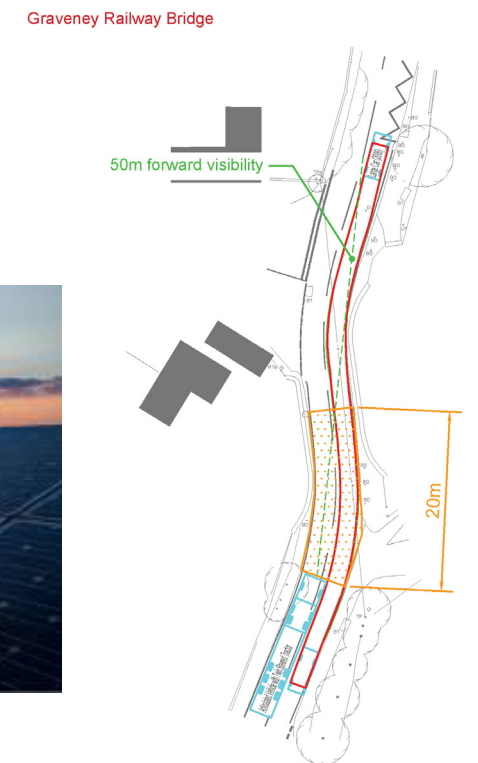
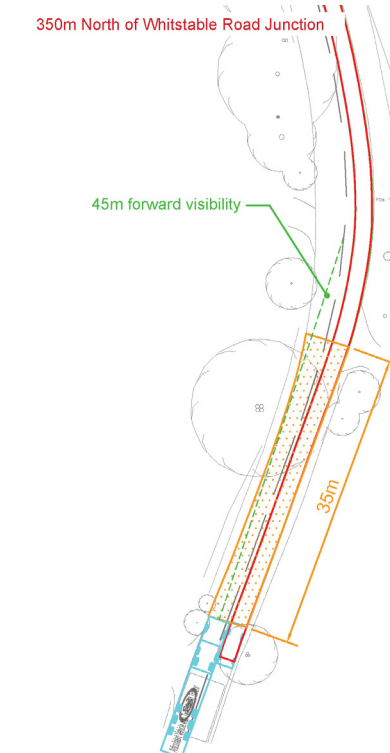
From transport and delivery management to full-service logistics provision, our business has grown to become a trusted name in infrastructure development logistics.

We enable clients to focus on the main facets of project delivery by providing assurance that the welfare, security, waste and vehicle holding facilities are being managed by industry experts.

We are keen to continue to support Private Energy Partners with

this technical expertise to ensure a seamless provision of an onsite logistics and stakeholder management service throughout the phases of this flagship project for Kent and ensure a future of sustainable success for PEP and Cleve Hill Solar Park.

Consolidation, Security (dog person cctv and mobile cctv) Labour, payroll, logistics planning, , CAD drawings, and site set-up.



Scanning

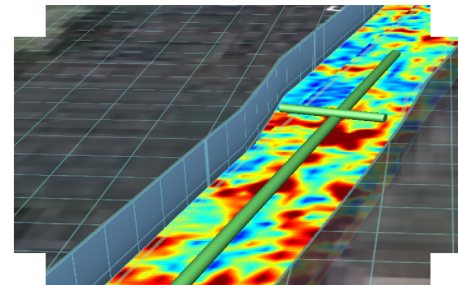
GPR

Mass data of above and below the road system can be collected simultaneously and at road speed. This considerably reduced the time needed for our team to be on-site, with the data being collected by a team of two in a single day.

With no need for any traffic management to be put in place, with no issues with road access and residents are generally unaware of any site work taking place.

Safety was also further increased by the two operators from the field to inside the vehicle.

- Minimal disruption to be caused to communities.
- Mass data set required of above and below ground assets.
- Safety of workers and general public a priority.
- Survey needing to mitigate obstructions and parked cars.



Mobile mapping

Mobile mapping survey risk parameters are lower than traditional methods, and in fact, are considered to be the lowest as is reasonably practical. Point clouds from mass data collection allow for automatic feature extraction, reducing processing time and significantly reducing costs.

With mobile mapping, you are no longer limited by unreachable areas or those considered high-risk for traditional survey methods.

Increased Versatility

- No limitations, with the ability to collect mass data from any type of vehicle, including rail, road and watercraft.

Saves Time

- Mass data sets able to be collected in a matter of hours, as opposed to multiple days or weeks with traditional methods.

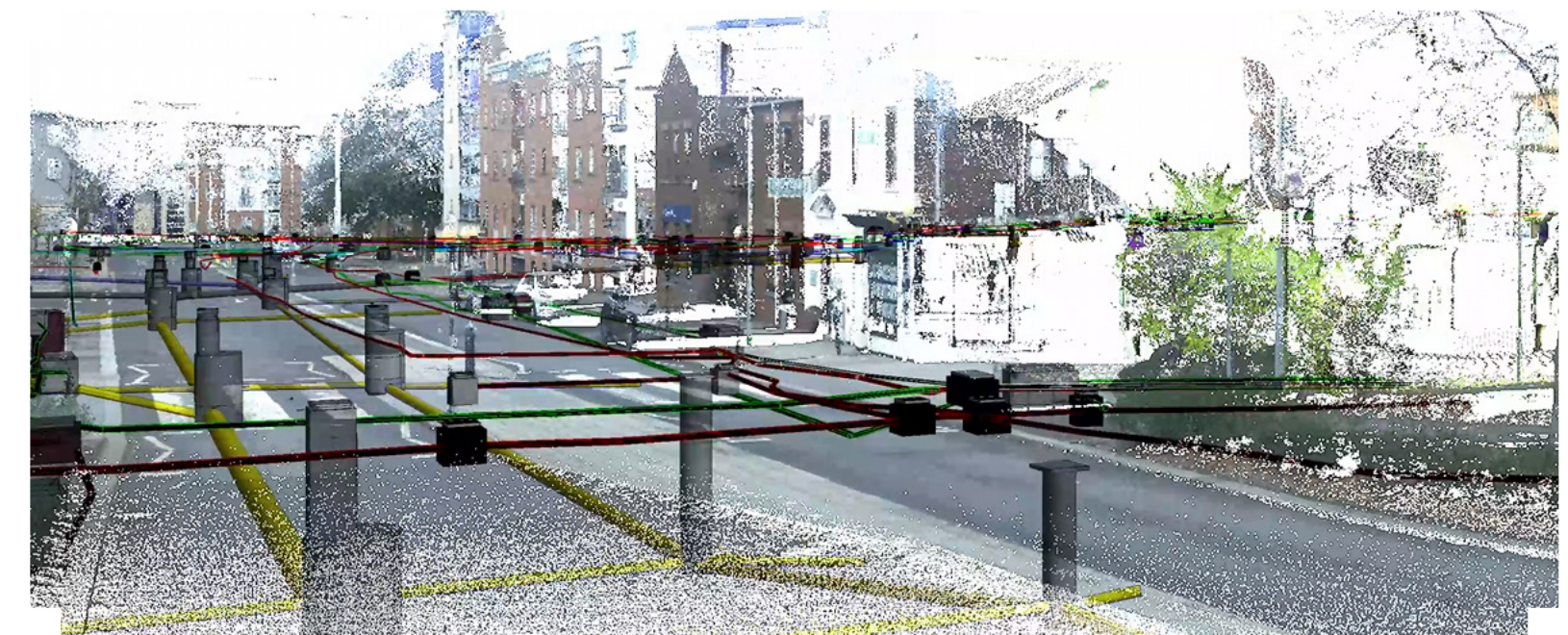
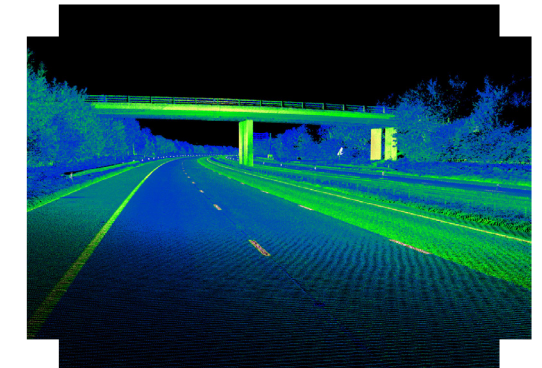
Improves Safety

- Fewer operatives required in potentially dangerous environments, reducing safety risks.



GPR + Mobile mapping

Combining Ground Penetrating Radar (GPR) with mobile mapping offers numerous benefits, enhancing both surface and subsurface data acquisition. This integration streamlines the process of locating underground utilities and geological features while simultaneously capturing high-resolution surface information. The real-time data collection improves accuracy and efficiency, reducing the need for multiple surveys. It enhances decision-making in construction, archaeology, and environmental monitoring by providing comprehensive insights into complex sites. This combination minimises risks and project delays, offering a cost-effective and thorough approach to surveying and mapping tasks.





Bridgehead Consultancy

📍 DH1

Lee Wilson

Managing Director

m: 07425 315 460

t: 0208 515 6810

e: lee.wilson@bridgeheadconsultancy.com

*Scan the QR code for
further info on our services.*

